

Edge

Instructions for the proxy configuration in Edge browser

To configure the proxy service in Edge browser you need to perform the following steps:

1. After clicking on the icon at the bottom left, select the "Impostazioni (Settings)" menu as indicated in figure 1

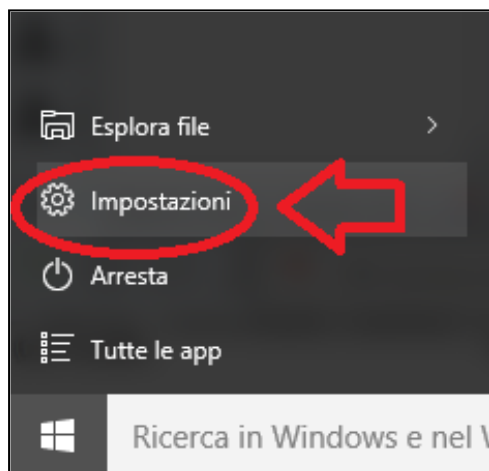


Figure 1 – Preferences.

2. Select the "Rete e internet (Network and Internet)" tab as shown in figure 2

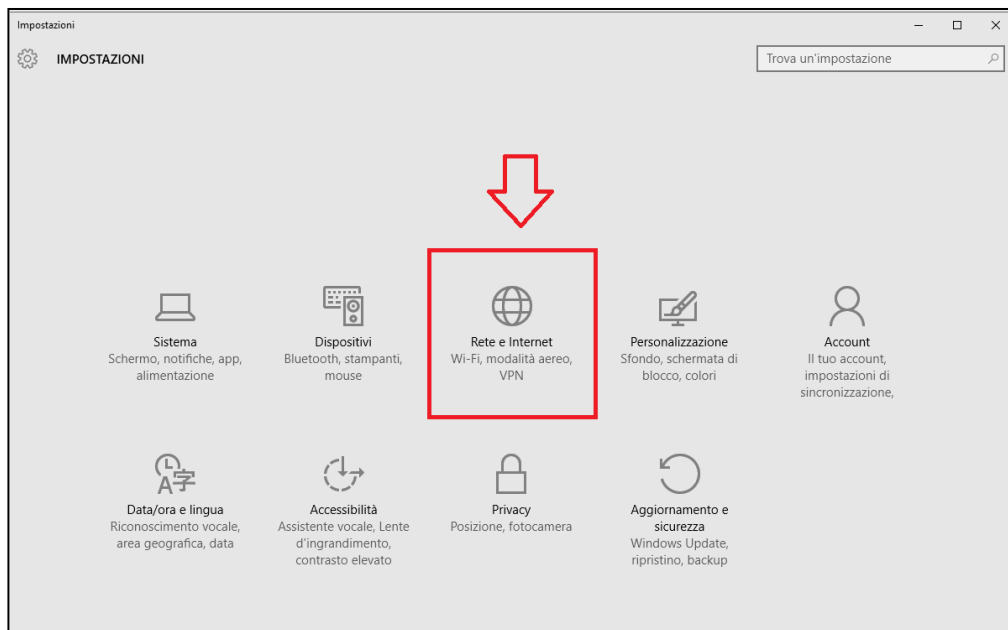


Figure 2 - settings - Network and Internet.

3. Select the "Proxy" item in the menu on the left, as shown in figure 3.

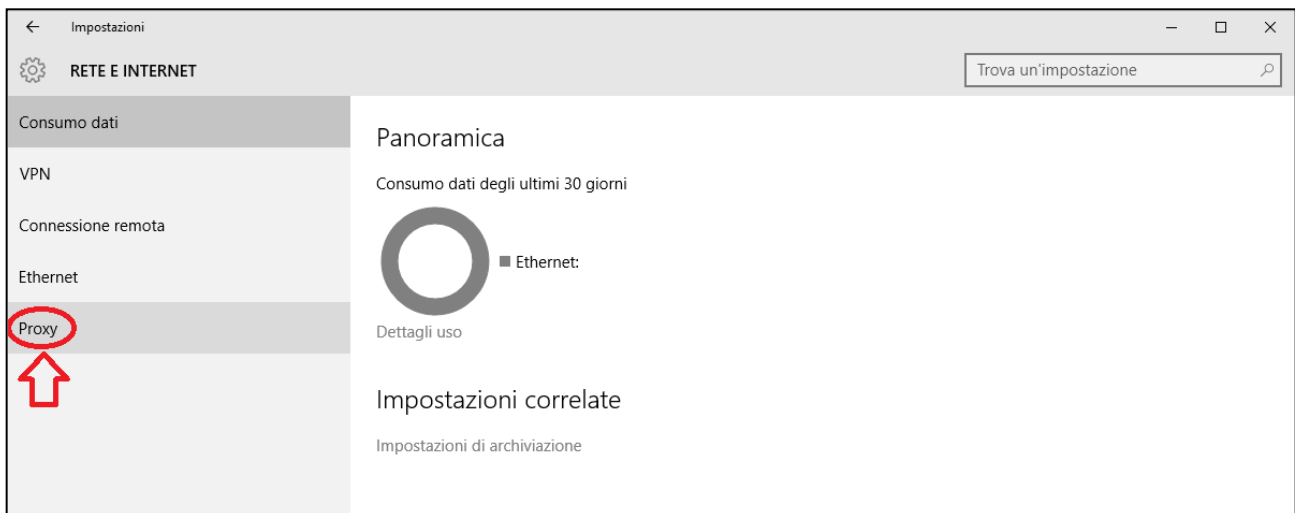


Figure 3 - Network and Internet – Proxy server.

4. In the "Proxy" tab, activate the "Use proxy server" option in the "Configurazione manuale del proxy (Manual proxy configuration)" as illustrated in figure 4

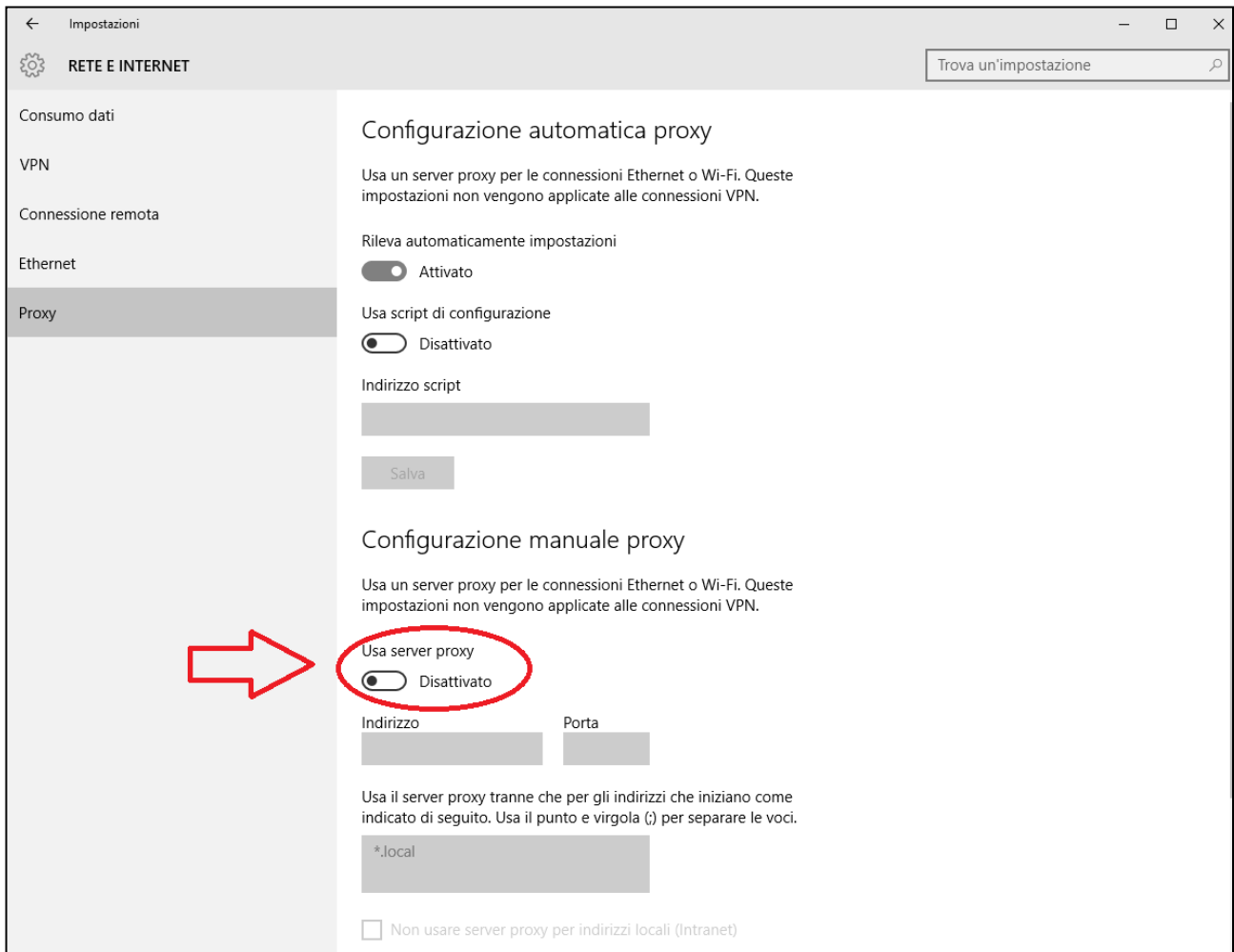


Figure 4 - Proxy - Manual proxy configuration.

5. Enter the text **proxy.unito.it** in the "Indirizzo (Address)" box and the value **3128** in the "Porta" box as shown in figure 5. After configuration, click on the "Save" button as shown in figure 5.

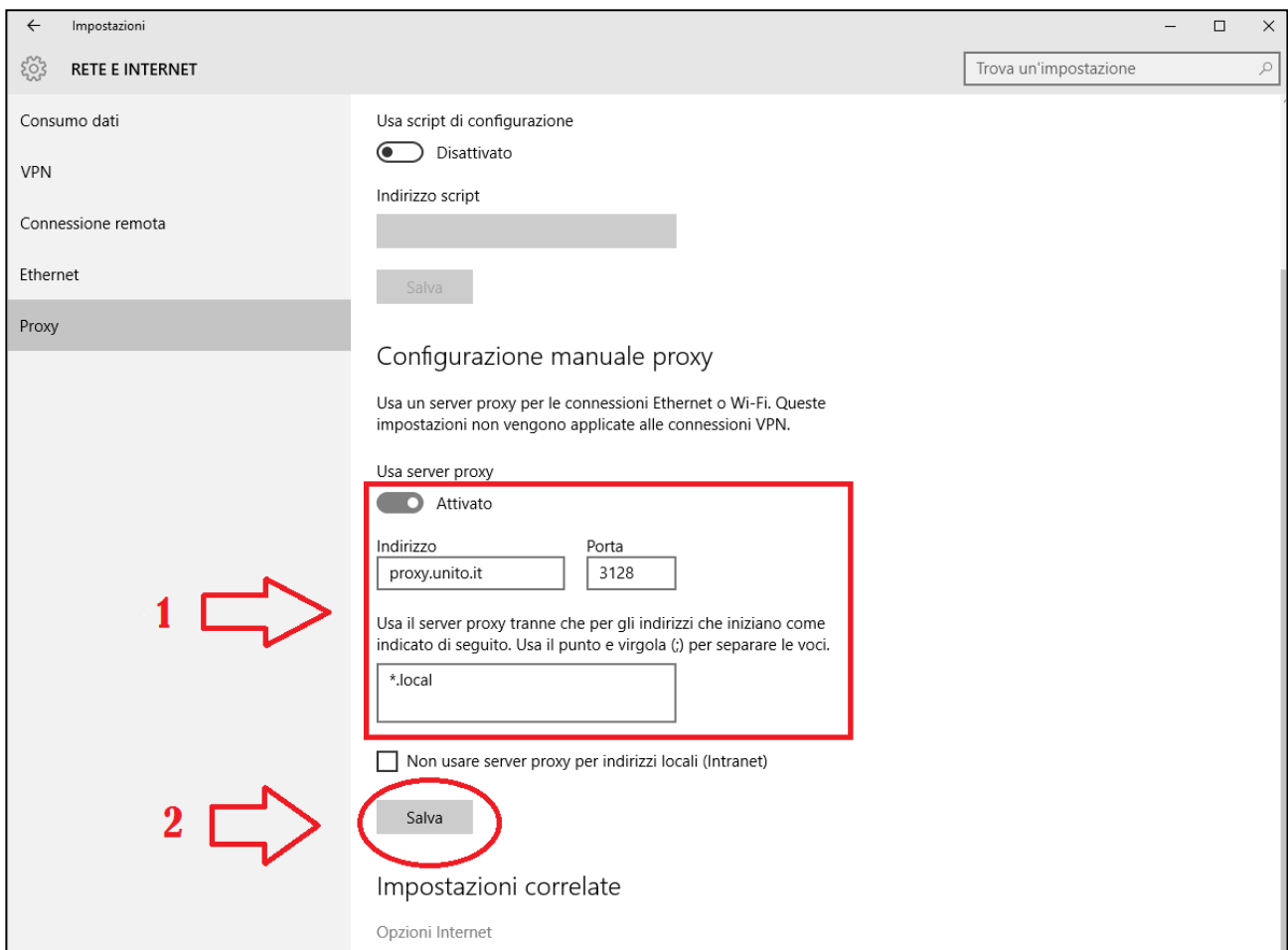


Figure 5 - Proxy configuration parameters

Now you can start browsing. Enter UniTO access credentials when requested. The same section also publishes instructions for the other main browsers in use.